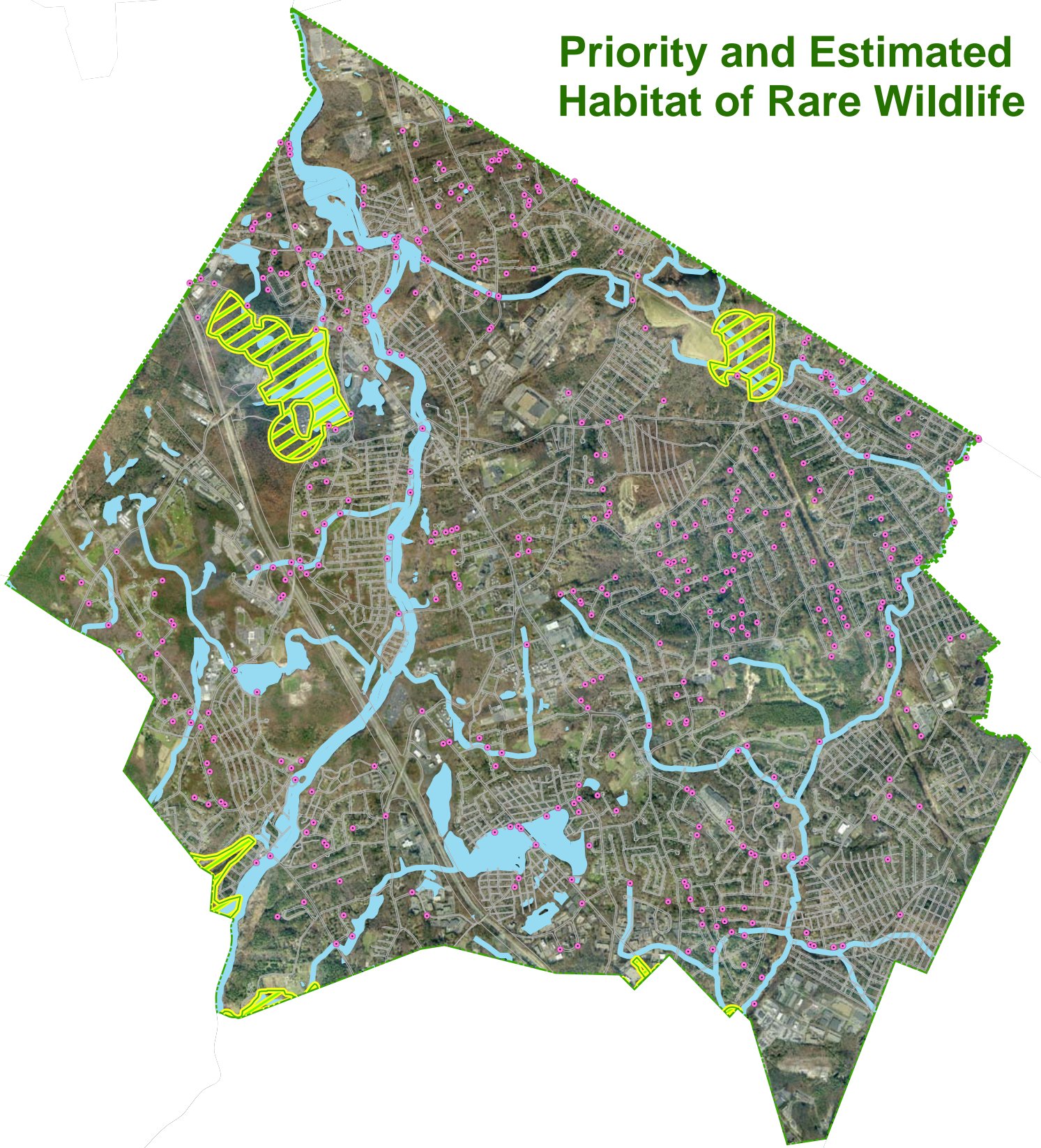







Priority and Estimated Habitat of Rare Wildlife



Legend

-  GPS Located Stormdrain Outfall
-  Roads
-  Surface Waters
-  NHESP Priority Habitats of Rare Wildlife
-  NHESP Estimated Habitats of Rare Wildlife

Source:
Mass GIS
Town of Billerica - GIS
Woodard and Curran



Prepared by Department of Public Works
Division of Engineering - GIS Service on March 07, 2007

DPW or the Town of Billerica are not liable for any inaccuracies in the data. The map is prepared for engineering and planning purposes only and should not be used for any legal boundary determinations.

Contact:
Department of Public Works,
Division of Engineering - GIS Service
Town Hall, 365 Boston Road, Billerica, MA 01821

G:\Gis\B_GIS\Projects\stormwater_mngmt\estim
ated_habitat.mxd



1 inch = 4,500 feet