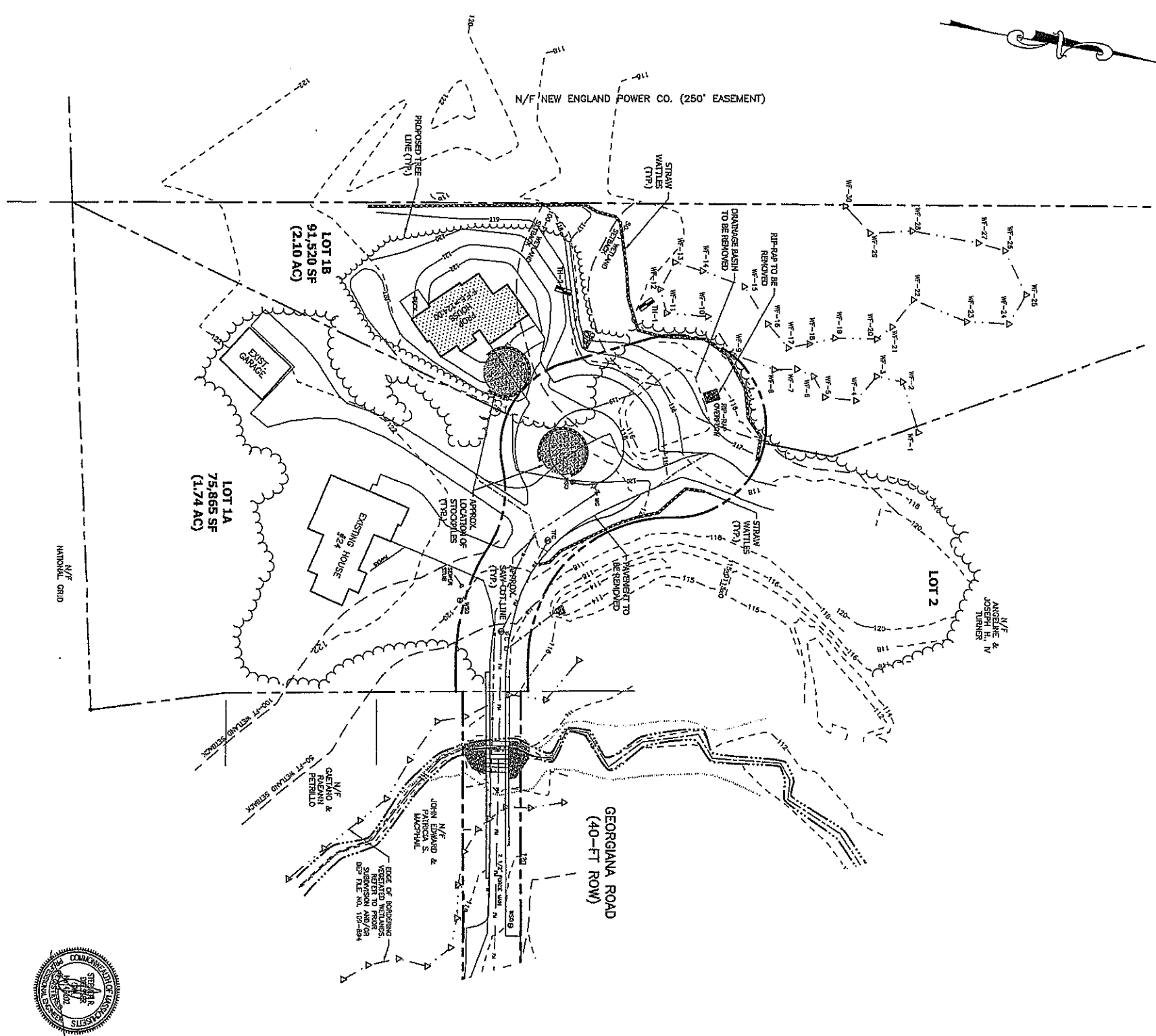
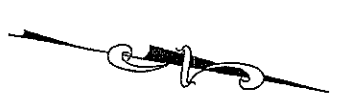


CLERK OF THE TOWN OF BILLERICA,
 HEREBY CERTIFY THAT NOTICE OF APPROVAL OF THIS PLAN BY THE
 BILLERICA PLANNING BOARD HAS BEEN RECEIVED AND RECORDED AT
 THIS OFFICE AND NO APPEAL WAS RECEIVED DURING THE TWENTY
 DAYS NEXT AFTER SUCH RECEIPT AND RECORDING OF SAID NOTICE.

DATE: _____ TOWN CLERK: _____

APPROVED BY
 BILLERICA PLANNING BOARD:

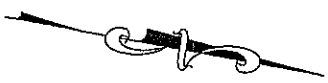
 DATE: _____



- PROPOSED CONSTRUCTION SEQUENCE**
1. INSTALL EROSION CONTROL
 2. SAWCUT AND RELIEVE EXISTING PAVEMENT & DRAINAGE BASIN
 3. CLEAR AND GRUB LOT 1B
 4. INSTALL UTILITIES
 5. INSTALL ROAD SUPERGRADE
 6. INSTALL CURBS AND SIDEWALKS
 7. PLACE BINDER COURSE PAVEMENT
 8. CONSTRUCT HOUSE
 9. LOAM AND SEED DISTURBED AREAS
 10. PLACE FINISH COURSE PAVEMENT



PREPARED FOR: SCOTT RUMLEY 24 GEORGIANA RD BILLERICA, MA	GEORGIA PINES ESTATES GEORGIANA ROAD BILLERICA, MA
DESIGN BY: DJG	EROSION CONTROL
DRAFT BY: DJG	
CHECK BY: SRD	SCALE: 1"=40'
FILE: RUMLEY PLANS	40 0 40 80 120
SHEET 4 OF 8	MAY 20, 2021
	Dresser, Williams & Way, Inc.
	574 BOSTON RD. BILLERICA, MA
	TEL: (978) 662-2110 FAX: (978) 662-8668
	www.dresserwilliams.com

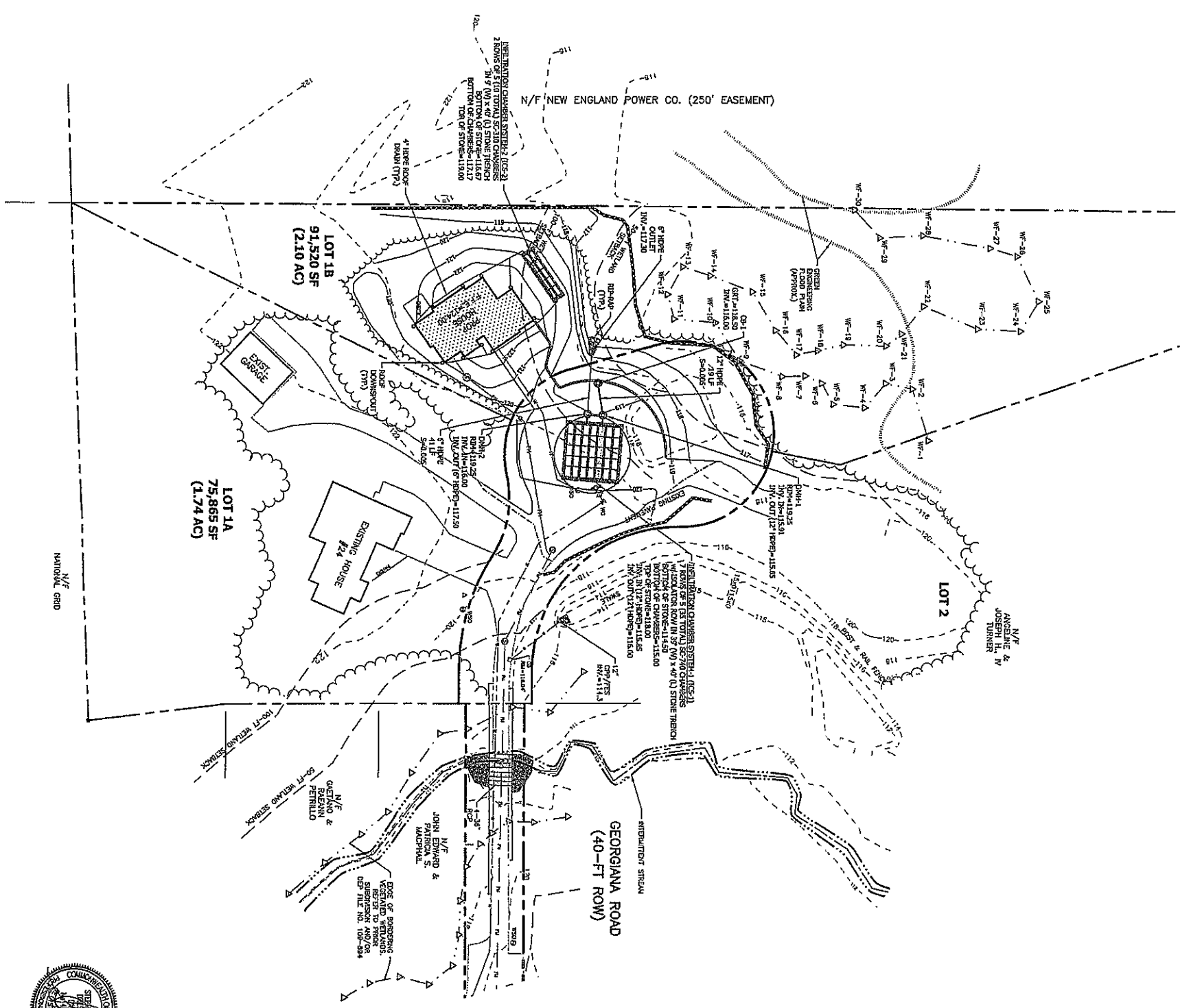


CLERK OF THE TOWN OF BILLERICA,
 HEREBY CERTIFY THAT NOTICE OF APPROVAL OF THIS PLAN BY THE
 BILLERICA PLANNING BOARD HAS BEEN RECEIVED AND RECORDED AT
 THIS OFFICE AND NO APPEAL WAS RECEIVED DURING THE TWENTY
 DAYS NEXT AFTER SUCH RECEIPT AND RECORDING OF SAID NOTICE.

DATE: _____ TOWN CLERK: _____

APPROVED BY
 BILLERICA PLANNING BOARD:

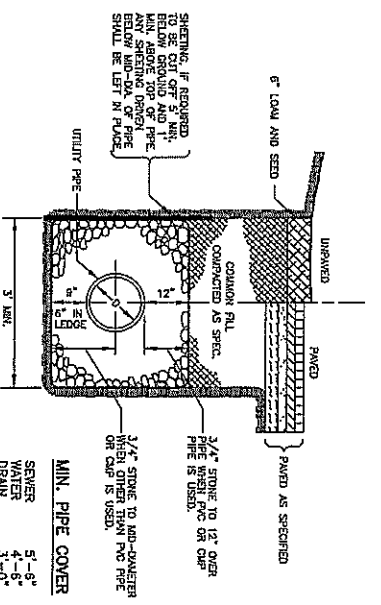
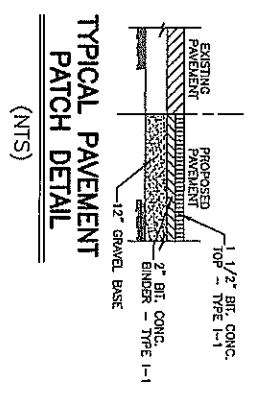
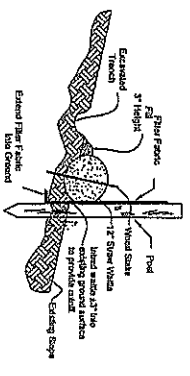
 DATE: _____



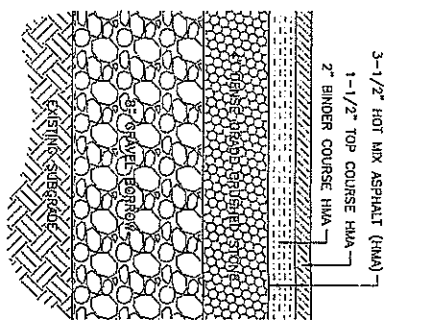
TH-1
 ELEV.=115.85±
 0-8"
 8-24"
 24-72"
 72-96"
 10R5/8 @ 72"
 TH-2
 ELEV.=118.20±
 0-5" AP 1st 10R3/3
 6-20" Bw 1st 10R5/4
 20-65" C1 SAND 2.57/3
 65-112" C2 SAND 2.57/4
 KEEPING @ 102"
 10R5/8 @ 85"



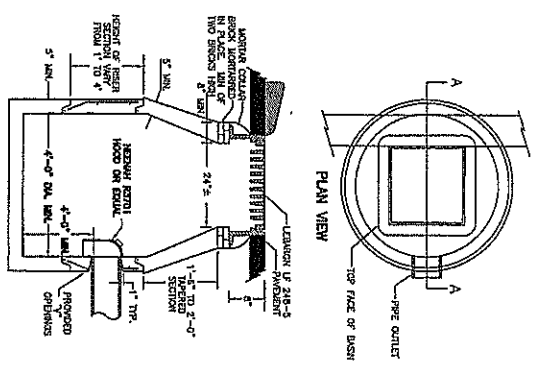
PREPARED FOR: SCOTT RINALDY 24 GEORGIANA RD BILLERICA, MA	MODIFIED SUBDIVISION PLAN GEORGIA PINES ESTATES GEORGIANA ROAD BILLERICA, MA
DESIGN BY: DJG DRAFT BY: DJG CHECK BY: SRD FILE: R001EY PLANS	GRADING & DRAINAGE SCALE: 1"=40'
SHEET 5 OF 8	Dresser, Williams & Way, Inc. 574 BOSTON RD. BILLERICA, MA TELEPHONE NO. (978) 563-1110 FAX NO. (978) 643-8856 Professional Engineers & Land Surveyors



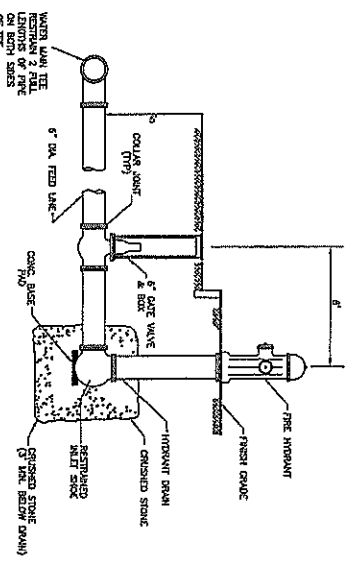
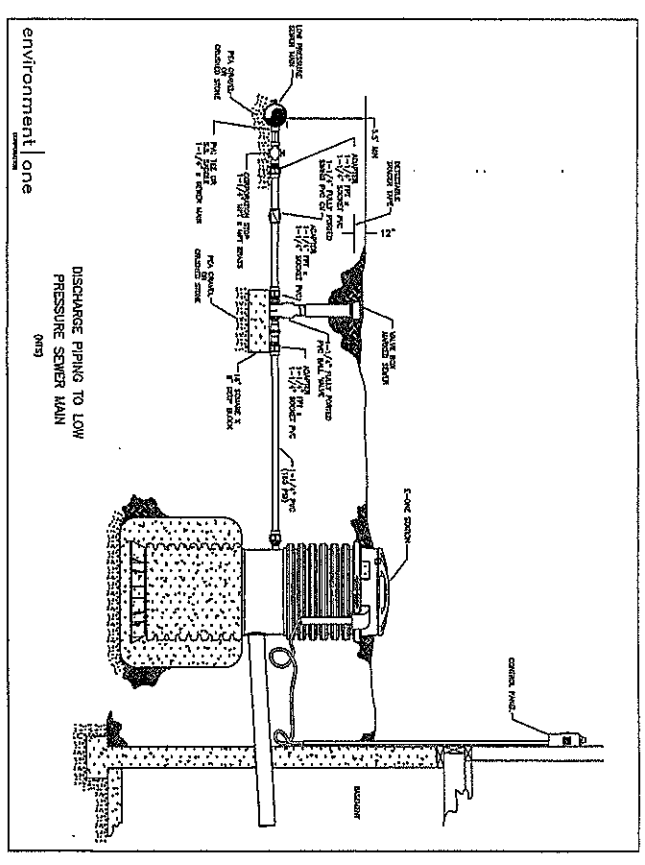
TYPICAL TRENCH SECTION (NTS)



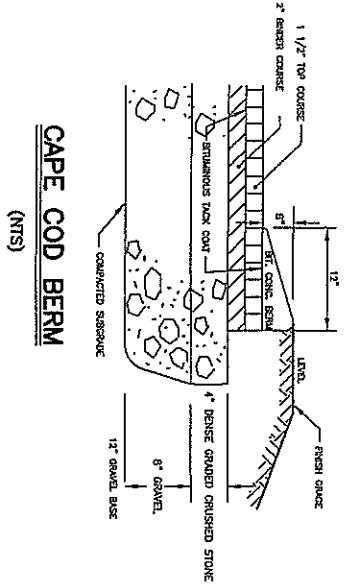
ROADWAY SECTION (NTS)



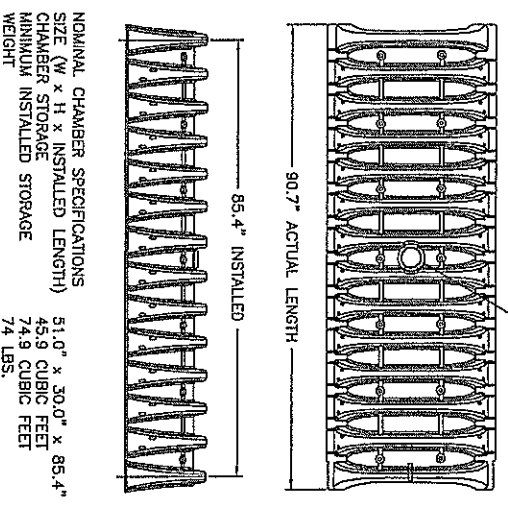
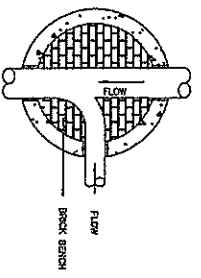
CATCH BASIN DETAIL (NTS)



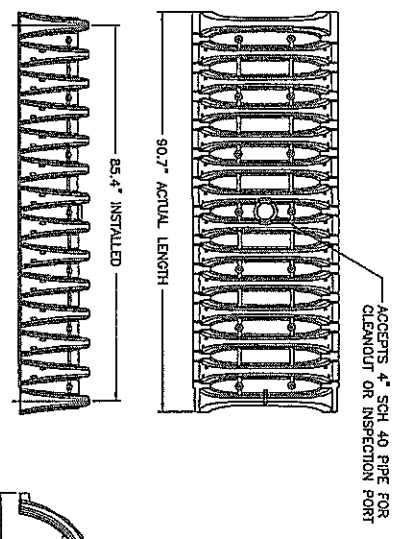
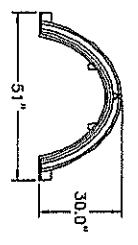
FIRE HYDRANT DETAIL (NTS)



CAPE COD BERM (NTS)



STORMTECH SC-740 CHAMBER NOT TO SCALE



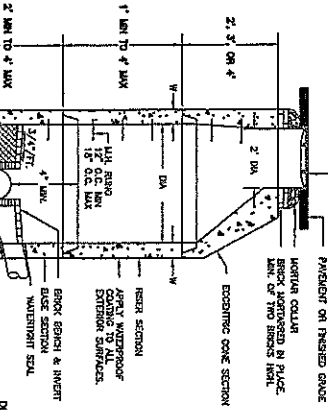
STORMTECH SC-310 CHAMBER NOT TO SCALE



CLERK OF THE TOWN OF BILLERICA HEREBY CERTIFY THAT NOTICE OF APPROVAL OF THIS PLAN BY THE BILLERICA PLANNING BOARD HAS BEEN RECEIVED AND RECORDED AT THIS OFFICE AND NO APPEAL WAS RECEIVED DURING THE TWENTY DAYS NEXT AFTER SUCH RECEIPT AND RECORDING OF SAID NOTICE.

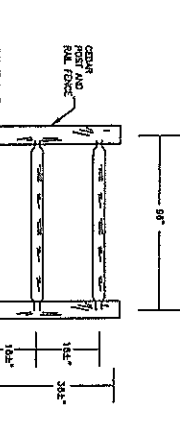
TOWN CLERK: _____

DATE: _____



STANDARD MANHOLE (NTS)

- NOTES:
1. CONCRETE 4000 PSI MINIMUM AFTER 28 DAYS.
 2. REINFORCED STEEL, CONFORMS TO LATEST ASTM A193 (SEE) AND A307 (SEE).
 3. H-30 DESIGN LADING PER ASTM JF-30-44.
 4. ASTM A36 STEEL FOR REINFORCING.
 5. CONCRETE MANHOLE SECTIONS.
 6. BRUNN, 6000 PSI CONCRETE TO LATEST.
 7. STEEL MANHOLE SECTIONS PER ASTM A36.
 8. STEEL MANHOLE SECTIONS PER ASTM A36.
 9. MANHOLE 4'-7" DIA MIN UNLESS OTHERWISE NOTED.



POST & RAIL FENCE (NTS)



MODIFIED SUBDIVISION PLAN
 GEORGIA PINES ESTATES
 GEORGIANA ROAD
 BILLERICA, MA

DETAILS

SCALE: 1"=40'

MAY 20, 2021

PREPARED FOR:
 SCOTT RUNLEY
 24 GEORGIANA RD
 BILLERICA, MA

DESIGN BY: DJG
 DRAFT BY: DJG
 CHECK BY: SRD
 FILE: RUMLET PLANS
 SHEET 8 OF 8

Dresser, Williams & Woy, Inc.
 574 BOSTON RD. BILLERICA, MA
 TEL: (978) 663-5410 FAX: (978) 663-5533
 Professional Engineers & Land Surveyors